



MML Law

MMLLAW .CO. UK

MMLLAW .CO. UK

01382 206000

property@mmlaw.co.uk

01382 206000 DUNDEE CITY | ANGUS | FIFE

22 North Street, Newtyle, Blairgowrie, PH12 8TT

Offers Over
£120,000



"Mid Terraced Two Storey Villa"

Accommodation: Entrance Porch to Hallway, Lounge, Kitchen, Two Doubled Bedrooms and Shower Room. Electric Heating, Double Glazing and Gardens.



MML Law

DUNDEE CITY | ANGUS | FIFE

22 North Street, Newtyle, Blairgowrie, PH12 8TT

Description

MML bring to the market this spacious Mid Terraced Two Storey Villa, the property is situated within a quiet area of Newtyle surrounded by similarly styled properties.

Limited amenities are available nearby including a local Shop, Post Office and Primary School. A wider range of facilities are available only a short drive away to Dundee which is only miles away or Perth which is seventeen miles away.

Accommodation comprises on the ground floor- Hallway, spacious lounge, kitchen with a range of wall and base mounted units and space for fridge freezer, cooker and washing machine.

On the upper level there are two double bedrooms and three piece shower room with walk in shower with WC.

The property benefits from electric panel heating throughout and double glazing.

This property requires modernisation and this has been reflected in the price.

Outside

The front garden area is laid in paving slabs with a similar slabbed area directly to the rear with an area of lawn. There are also two external stores to the rear of brick construction.

Area

Newtyle is within easy commuting distance of Dundee and Perth. There is a village shop, post office and other amenities. There is also an excellent primary school.



22 North Street, Newtyle, Blairgowrie, PH12 8TT



MML Law

DUNDEE CITY | ANGUS | FIFE

22 North Street, Newtyle, Blairgowrie, PH12 8TT

Viewing

By appointment through Solicitors on 01382 206000 or alternatively for evenings and weekends telephone 07471 436465.

Home Report

Contact Solicitor for a Copy of the Home Report.

Accommodation

Lounge	14'4" x 14'
Kitchen	8'9" x 14'
Bedroom 1	14' x 8'5"
Bedroom 2	13'2" x 10'7"
Shower Room	6'5" x 6'5"



22 North Street, Newtyle, Blairgowrie, PH12 8TT

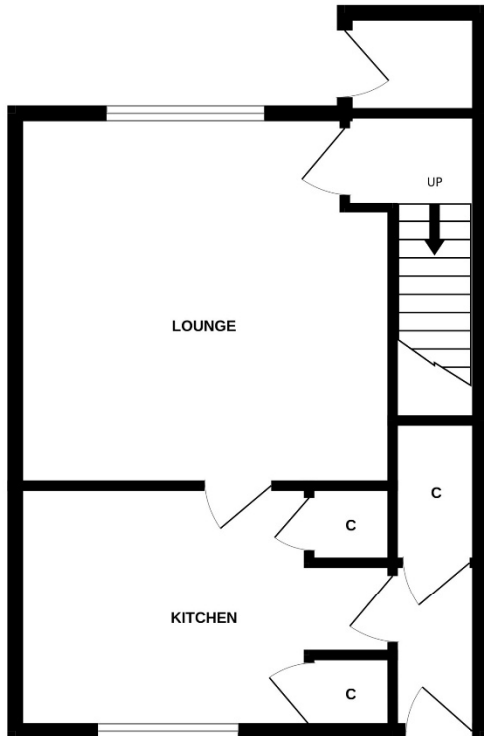


MML Law

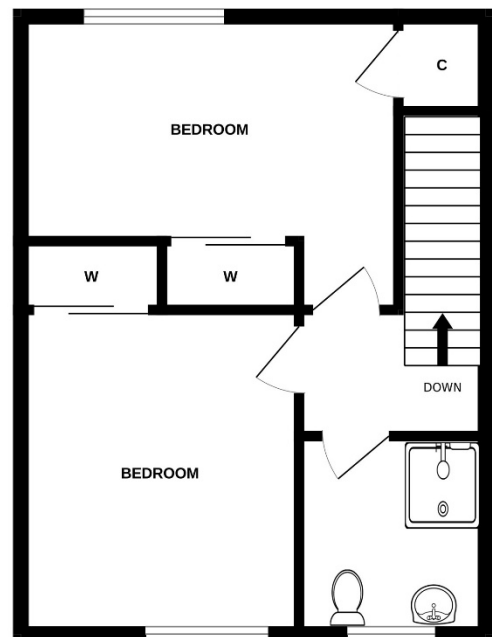
DUNDEE CITY | ANGUS | FIFE

22 North Street, Newtyle, Blairgowrie, PH12 8TT

GROUND FLOOR



1ST FLOOR



Whilst every attempt has been made to ensure the accuracy of the floorplan contained here, measurements of doors, windows, rooms and any other items are approximate and no responsibility is taken for any error, omission or mis-statement. This plan is for illustrative purposes only and should be used as such by any prospective purchaser. The services, systems and appliances shown have not been tested and no guarantee as to their operability or efficiency can be given.
Made with Metropix ©2026



MML Law

DUNDEE CITY | ANGUS | FIFE



MML Law

MMLLAW.CO.UK

01382 206000

property@mmlaw.co.uk
DUNDEE CITY | ANGUS | FIFE