



Alan E Masterton
SOLICITORS & ESTATE AGENT

DD5 ESTATE AGENTS

12-14 Maule Street, Monifieth
Angus, DD5 4JN

t.01382 539313 f.0845 643 1609

e.info@legaleagles.tv w.legaleagles.tv



2 Bedroomed End Terraced Villa
25 Gallowshade Road, Forfar, DD8 1LY

Offers Over £115,000

www.legaleagles.tv

DD5 ESTATE AGENTS

2 Bedroomed End Terraced Villa

25 Gallowshade Road, Forfar, DD8 1LY

Located on a quiet street of similar properties, this two-bedroom end-terraced home combines spacious living areas with generously sized bedrooms and stylish yet practical outdoor space.

The property comprises a bright and spacious lounge, enhanced by natural light from a large window overlooking the front garden. The lounge flows seamlessly into the dining kitchen, creating a practical and sociable living space. From here, there is direct access to the modern, landscaped rear garden — ideal for indoor-outdoor dining and relaxing during the warmer months. The accommodation is completed by two well-proportioned bedrooms and a bathroom.

Situated within a popular yet peaceful street, this highly sought-after area is conveniently located close to a range of local amenities, including schools, shops, and excellent transport links.

Lounge:

This spacious and well-proportioned room features a large window overlooking the front garden that allows an abundance of natural light to fill the room.

Kitchen/Dining Room:

A bright space with ample storage space provided by a good range of wood effect floor and wall storage units with complimentary worktops and splashback. The Kitchen also benefits from a large storage cupboard and space for dining. Windows provides an open outlook across the garden and side of the home with external door connecting to the outdoor space, making it an ideal spot for entertaining and relaxing in the warmer months.

Bathroom:

A generously sized bathroom room that consists of a bath with electric shower overhead, wash hand basin and W.C.

Bedroom 1:

A very spacious bright and airy double bedroom with windows overlooking the front of the home. This bedroom also benefits from a built-in wardrobe.

Bedroom 2:

Another bright and spacious bedroom, with large window overlooking the rear garden.

Garden Areas:

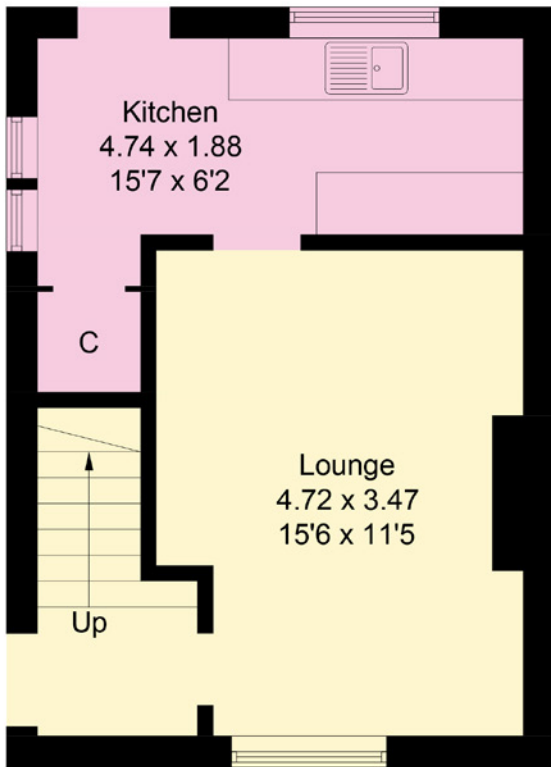
Attractive, low maintenance garden areas to the front and back of the property. The front garden is laid to lawn, complemented by a slabbed pathway that leads to the side of the home. To the rear, the modern garden has been thoughtfully designed for ease of upkeep, with patio areas alongside a blend of decorative stone, paving slabs, and section of grass — creating a stylish yet practical outdoor space.



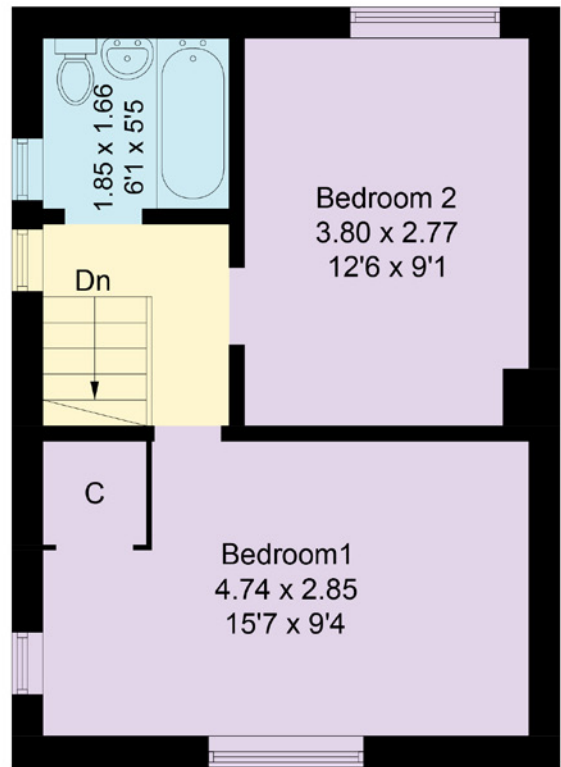






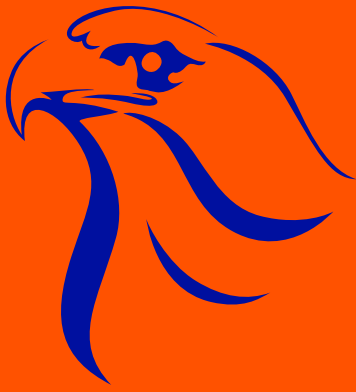


Ground Floor



First Floor

Illustration for identification purposes only, measurements are approximate, not to scale. Fourlabs.co © (ID1290338)



Alan E Masterton

SOLICITORS & ESTATE AGENT

Council Tax Band:

A (April 2026)

EPC Band:

C

Viewings:

By prior appointment only. Contact us on 01382 539 313 during normal office hours to arrange your 15-minute viewing slot or alternatively you can arrange your appointment by e-mailing us at: viewingstobook@gmail.com (viewings must be arranged at least 24 hours before your requested viewing date/time)

12-14 Maule Street,
Monifieth, Angus
DD5 4JN

t. 01382 539 313
f. 0845 643 1609
e. viewingstobook@legaleagles.tv
w. legaleagles.tv
www.tspc.co.uk

Tel: **01382 539 313** Email: viewingstobook@gmail.com
www.legaleagles.tv www.tspc.co.uk

Note:

Whilst every care is taken to ensure these are correct, all sizes have been taken using laser measuring device and therefore no sizes or descriptions herein are guaranteed and do not form part of any contract to follow hereon. All measurements are approximate and for guidance only, all sizes are taken at the widest points for each room, unless otherwise specified. The agent has not tested and apparatus, equipment, fixtures, fittings or services and therefore we are unable to confirm the functionality or fitness for purpose of any such, any potential purchaser should check with their own legal advisor or suitably qualified surveyor on such issues, if the availability of children places at local or any school is an essential requirement with regard to advancing an offer for this property then potential purchasers should make their own enquires directly to the local education authority prior to submitting an offer for this property and satisfy themselves as to the position with school places prior to making any such offer, the sellers and their agents accept no responsibility whatsoever for ensuring school places are available or otherwise in any catchment area.

Attic space inspection policy: this firm do not indemnify viewers from any damage done to the property or to themselves as a result of viewer inspections of the attic space of properties marketed by us, if you wish to have the attic space inspected please instruct a qualified and indemnified surveyor or architect to do so, alternatively please advise this firm at the time of making your viewing appointment that you are prepared to undertake the responsibility for any damage that occurs to the property and/or your good self and we will prepare a form of undertaking for you to sign before you gain access to the attic space, (please bring photo id with you also) you should also bring along your own access ladders as none will be provided.

www.legaleagles.tv

"WHEN RESULTS MATTER"

ESTATE AGENTS • POWER OF ATTORNEY • WILLS • EXECUTRIES

Estate Agents and Innovators in Property Exchange for the Private Individual and Business Portfolio Builder.
House Purchase & Sales Legals, Remortgages, Wills & Executries, Rental Property Global Management Services.

Alan E Masterton Solicitors is the trading name of AEMS Ltd. Company Number SC0329130.
Registered office: 12-14 Maule Street, Monifieth, Angus DD5 4JN

Selling, Buying and Leasing Property in...



MONIFIETH

BROUGHTY FERRY

FORFAR

PERTH

ARBROATH