



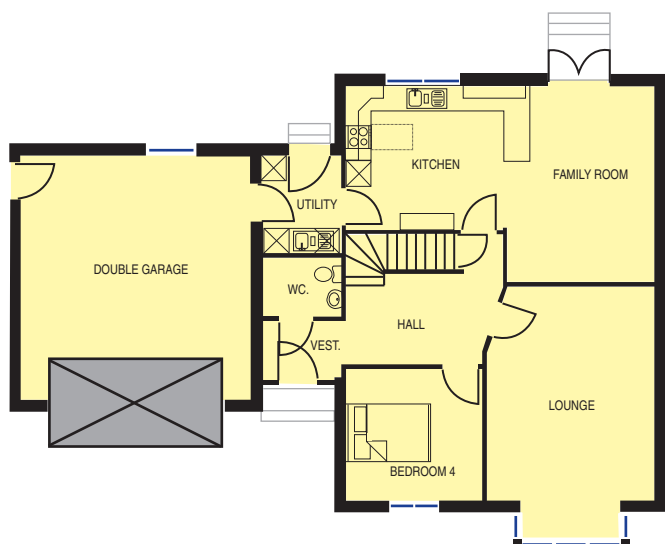
**Glencoe**

A prestigious and spacious four bedroom home



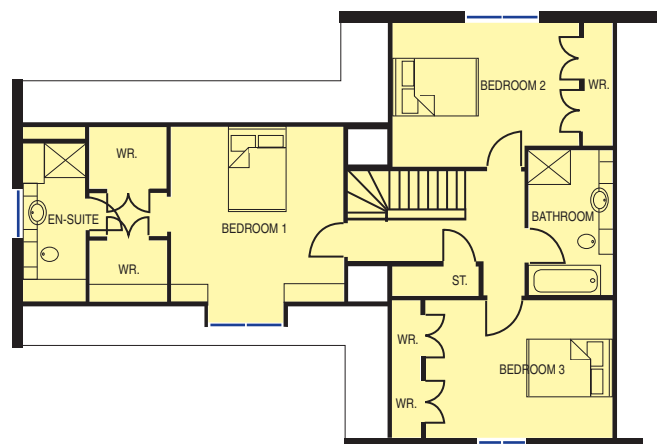
An exceptional family home with spacious living accommodation, four generous bedrooms and a double integral garage.

**floor area 171m<sup>2</sup>**  
(excluding garage)



**Ground floor plan**

Lounge	5150 x 4030
Kitchen / Family	7410 x 4710
Utility	2350 x 1920
Cloakroom WC	1920 x 1422
Bedroom 4	3145 x 3280
Garage	5860 x 5500



**First floor plan**

Bedroom 1	4200 x 4140
En-Suite	3250 x 1500
Bedroom 2	4480 x 3460
Bedroom 3	4490 x 3300
Bathroom	3500 x 2000