



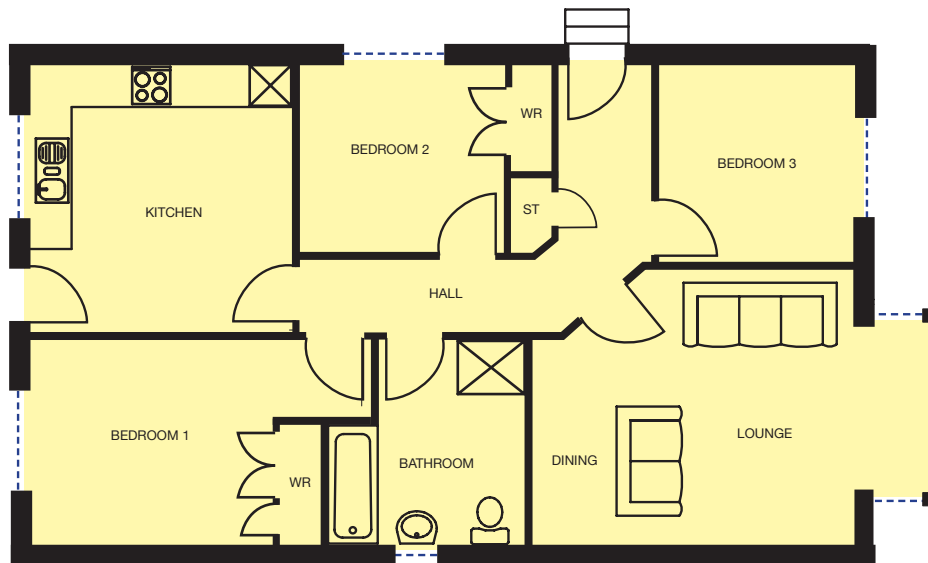
# Glenisla

Three bedroom bungalow **Standard**



A traditional three bedroom bungalow that benefits from both its spacious design and practicality.

**floor area 86m<sup>2</sup>**



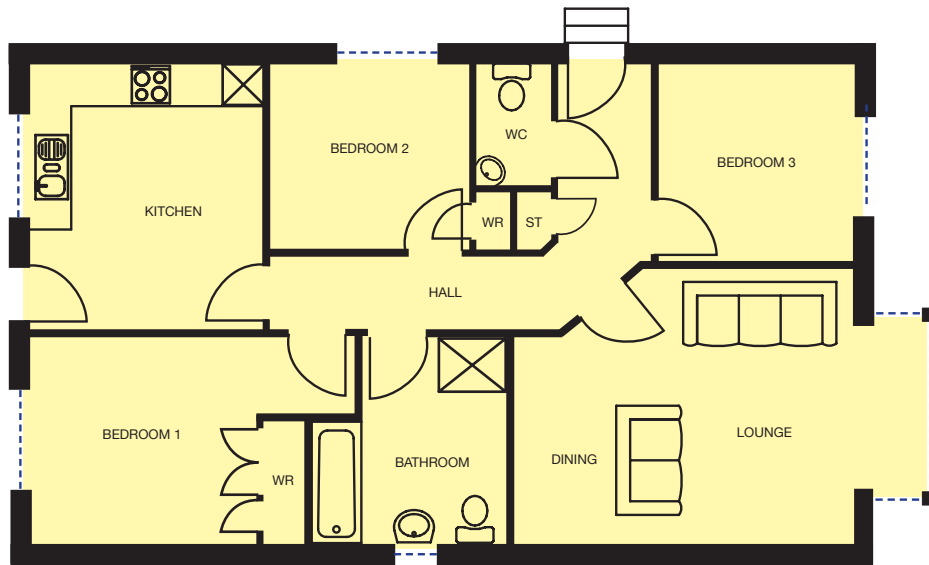
## Floor plan

Lounge	5660 into bay x 4000	Bedroom 2	3000 x 2725
Kitchen	3800 x 3900	Bedroom 3	2868 x 2900
Bedroom 1	3530 x 3000	Bathroom	2871 x 3000



A traditional three bedroom bungalow that benefits from both its spacious design and practicality.

**floor area 86m<sup>2</sup>**



**Floor plan**

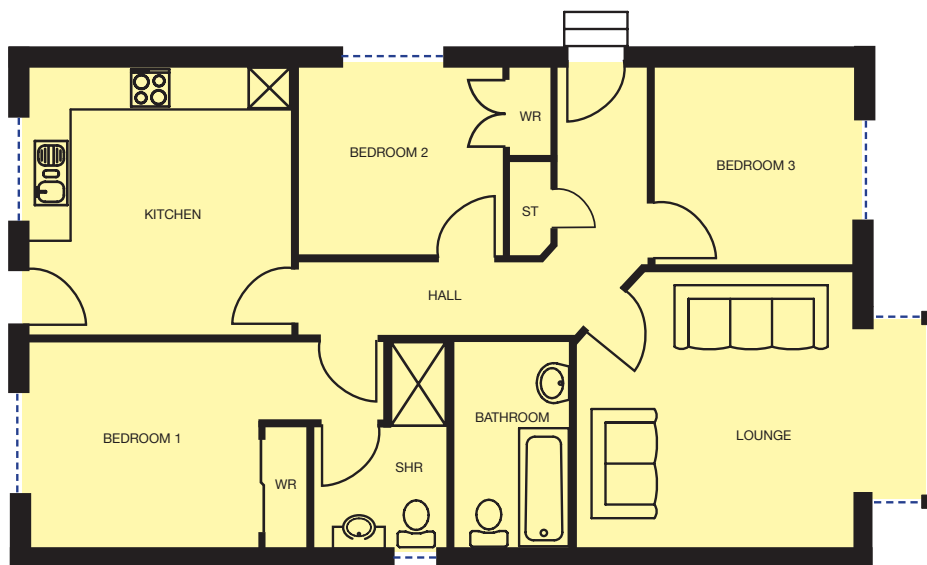
Lounge	5910 into bay x 4000
Kitchen	3400 x 3900
Bedroom 1	3300 x 3000

WC	1100 x 1800
Bedroom 2	2900 x 2725
Bedroom 3	2868 x 2900
Bathroom	2830 x 3000



A traditional three bedroom bungalow that benefits from both its spacious design and practicality.

**floor area 86m<sup>2</sup>**



**Floor plan**

Lounge	4960 into bay x 4000
Kitchen	3800 x 3900
Bedroom 1	3360 x 3000

Shower Room	1940 x 3000
Bedroom 2	3000 x 2725
Bedroom 3	2868 x 2900
Bathroom	1700 x 3000