



MML Law

MMLLAW .CO. UK

MMLLAW .CO. UK

01382 206000

property@mmlaw.co.uk

01382 206000 DUNDEE CITY | ANGUS | FIFE

62 Tweed Crescent, Dundee, DD2 4DT

Offers Over
£80,000



"Top Floor Masionette Flat"

Accommodation: Hall, Lounge, Kitchen, 3 Bedrooms, Bathroom, Double Glazing, Electric Heating, Security Entry, Mutual Gardens.



DUNDEE CITY | ANGUS | FIFE

62 Tweed Crescent, Dundee, DD2 4DT

Description

This top floor maisonette flat provides spacious accommodation and is set in a quiet residential area of similarly styled properties to the west of Dundee City. The property is in need of upgrading and this is reflected in the asking price.

The accommodation comprises: Entrance hall with good sized storage cupboards, stairs to upper floor, spacious bright lounge with double aspect windows offering comfortable living space. Good sized kitchen with wall and base mounted units.

On the upper level there is further spacious storage cupboard located on the landing and 3 bedrooms, one benefitting from fitted wardrobe. Bathroom with three-piece white suite and electric shower over bath. The property benefits from double glazing and electric storage heating.

Outside

There are mutual grounds around generally laid to grass and there is also a mutual drying area defined by concrete block walling also laid to grass. Boundaries generally are of metal rail fencing.

There are external concrete steps leading up from the pathway to the stairwell door.

Ideal property for the Buy-to-let sector.

Area

Tweed Crescent is situated close to all local amenities including schools at both Primary and Secondary levels, shops and mainline bus service. Ninewells Hospital and Dundee Technology Park are within walking distance and Universities are only a short distance away.



62 Tweed Crescent, Dundee, DD2 4DT



MML Law

DUNDEE CITY | ANGUS | FIFE

62 Tweed Crescent, Dundee, DD2 4DT

Viewing

To view contact the Solicitors on 01382 206000.

Home Report

For a copy of the Home Report contact the Solicitors.

Accommodation

Lounge	14'4" x 12'11"
Kitchen	10'3" x 7'9"
Bedroom 1	11' x 9'9"
Bedroom 2	9'9" x 7'1"
Bedroom 3	9'9" x 6'10"
Bathroom	7'9" x 7'5"



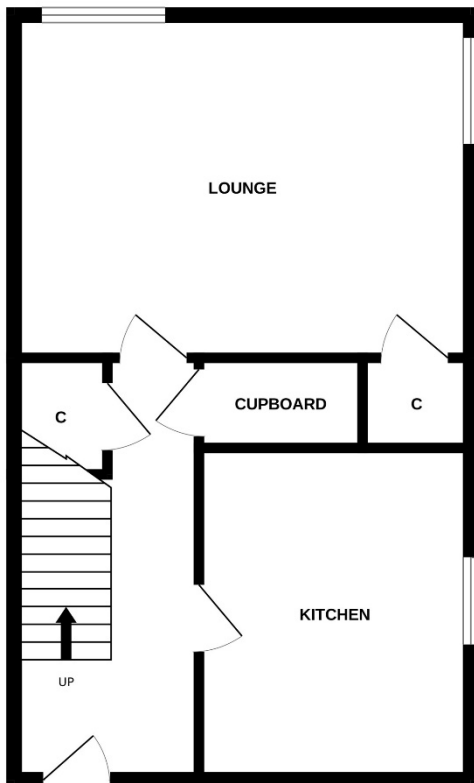
62 Tweed Crescent, Dundee, DD2 4DT



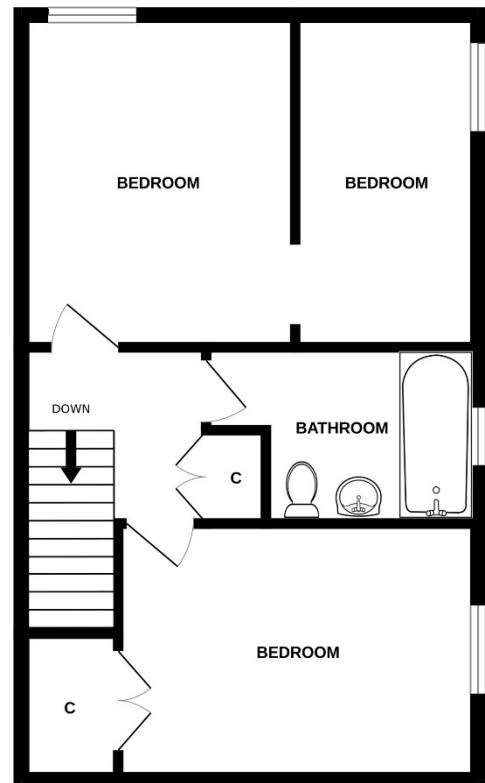
DUNDEE CITY | ANGUS | FIFE

62 Tweed Crescent, Dundee, DD2 4DT

THIRD FLOOR



FOURTH FLOOR



Whilst every attempt has been made to ensure the accuracy of the floorplan contained here, measurements of doors, windows, rooms and any other items are approximate and no responsibility is taken for any error, omission or mis-statement. This plan is for illustrative purposes only and should be used as such by any prospective purchaser. The services, systems and appliances shown have not been tested and no guarantee as to their operability or efficiency can be given.
Made with Metropix ©2024





MML Law

MMLLAW.CO.UK

01382 206000

property@mmlaw.co.uk
DUNDEE CITY | ANGUS | FIFE