





OUTSTANDING QUALITY AND SPECIFICATION

- 10 Year Warranty on Superstructure
- Air source heat pump (low running costs)
- Full UPVC double-glazing wall, floor and roof insulation
- Secure by Design composite external doors with 3 point locking system
- Ground floor underfloor heating with radiators upstairs
- Solar panels fitted on the roof as standard
- German internal bespoke doors with quality chrome ironmongery
- Walls and ceilings painted white
- Luxury fitted kitchen including upstand, with freestanding oven and hob, extractor, and freestanding Fridge Freezer, dishwasher, and washing machine
- Outside tap below Kitchen window
- Bathroom - Luxury wall hung WC, wall hung Wash hand basin with chrome thermostatic shower over bath including shower screen
- WC - Luxury wall hung WC and wash hand basin
- Built in wardrobes
- Mains operated smoke alarm with battery back up and carbon monoxide detector
- Generous power points throughout
- Kitchen, Bedroom 1, and living room with built in USB socket
- Choice of Fibre BT media or fibre Virgin media
- Television points in Lounge (Wire Only)
- Turfed Front Garden, Top soil only in the rear garden with slabbed patio area and Whirly dryer
- Car parking with monobloc and precast slabs to footpaths
- 1.8 metre high treated timber fence and gate to rear garden
- Fully floored attic storage & insulated access hatch with loft ladder
- EPC rating - A





House B2 MacRobert stepped frontage



House B2 MacRobert frontage



House B1 Law

Located in a long established residential area of Dundee. Rosebank/Tulloch Crescent, will be a select development comprising of Ten Eco energy efficient new build houses. They are well placed for easy access to surrounding amenities, schools, retail and business parks, including a local convenience shop on the door step. The location benefits from a regular commuter bus service reaching out to most of the city and major employment centres.

Rosebank/Tulloch Crescent is a small residential development of 10 quality Eco build homes which will provide the occupier with a modern energy efficient heating system, which is backed up by excellent standards of insulation, double glazed windows.

German manufactured interior doors which are a standard feature of the thoughtfully planned accommodation. Built by Discovery Homes these are quality assured houses which have been future proofed to comply with new building regulations to enhance their eco credentials, which means these homes are highly energy efficient. There is a mixture of detached and semi-detached 3-bedroom villas and spacious 2-bedroom bungalows.



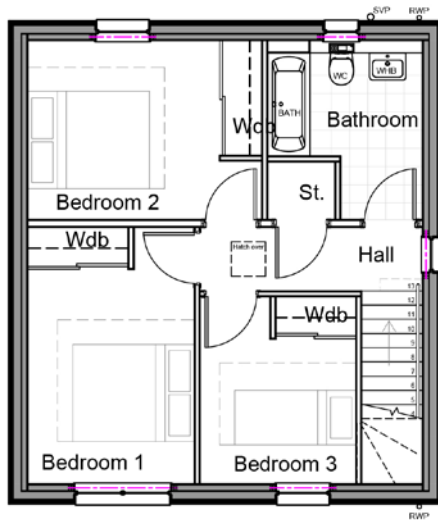
DISCOVERY HOMES

Discovery Homes are renowned for their innovative, well-designed layouts offering ample family accommodation. The contemporary open plan and semi open plan designs feature, bright airy accommodation with the villas comprising of WC on the ground floor, large lounge, dining, family area and fully equipped Luxury kitchens. Each property features Monobloc parking, turfed front gardens, clothes dryer and a high screened fence for privacy and security. A choice of kitchens and tiling is available subject to build timescale. The specification list contained within these particulars underlines the quality this small, select, private development has to offer. Discovery Homes are a highly regarded developer with a long history of successful new build developments within the city. Their ethos is to build innovative, high quality yet affordable family homes of lasting style and comfort.

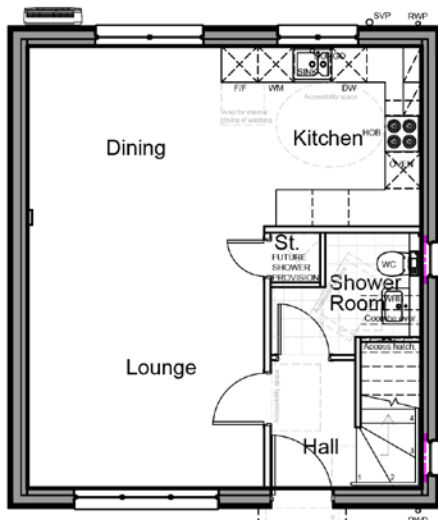
Note: Discovery Homes Dundee Ltd makes every effort to ensure that all particulars are correct and up to date. The illustrations, floor plans and details shown are taken from the original plans and drawings for the development and are provided at this stage to give indications of the proposed layouts and finishings. These may alter during the construction and should be considered on that basis. The choices available within the specification list are subject to change within the build schedule.

FLOORPLANS

TYPE B1 LAW

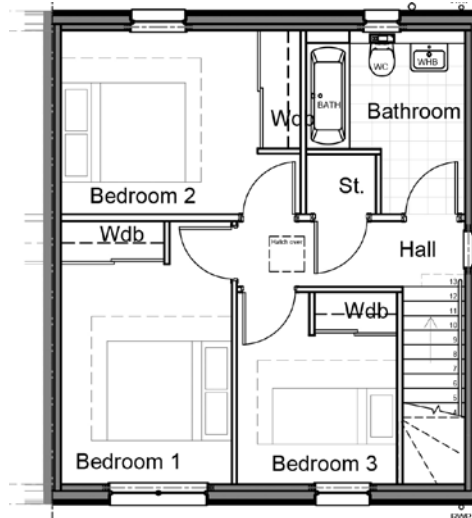


First floor

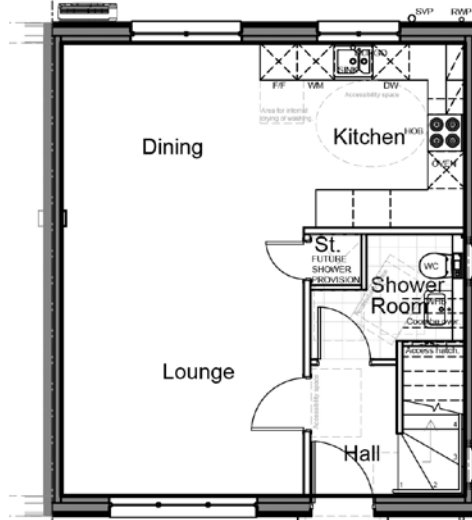


Ground floor

TYPE B2 SEMI

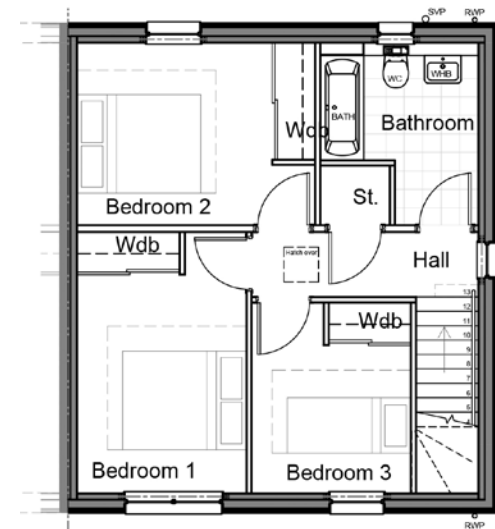


First floor

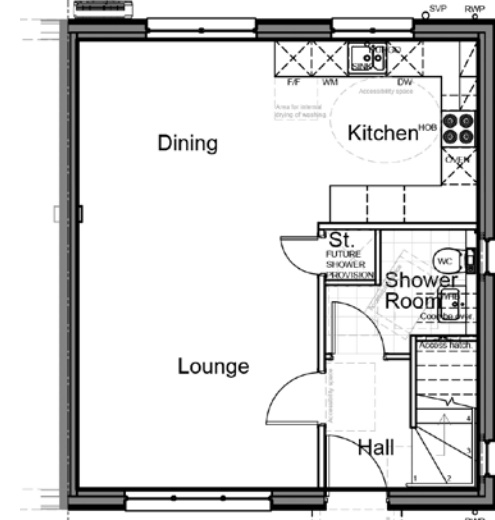


Ground floor

TYPE B2 SEMI STEPPED



First floor



Ground floor



GILSON GRAY

LAW • PROPERTY • FINANCE

GILSONGRAY.CO.UK

EDINBURGH

29 Rutland Square
EH1 2BW
0131 516 5366



GLASGOW

160 West George Street
G2 2HQ
0141 530 2021



EAST LOTHIAN

33 Westgate
EH39 4AG
01620 893 481



DUNDEE

2 West Marketgait
DD1 1QN
01382 201 000



BORDERS

01890 880 008



@gilsongrayprop



gilson gray property



gilson gray property



@gilsongrayprop

These particulars were prepared on the basis of our own knowledge of the local area and, in respect of the property itself, information supplied to us by our clients; all reasonable steps were taken at the time of preparing these particulars to ensure that all details contained in them were accurate. All statements contained in the particulars are for information only and all parties should not rely upon them as statements or representations of fact. In particular, (a) descriptions, measurements and dimensions, which may be quoted in these particulars are approximate only and (b) all references to conditions, planning permission, services, usage, constructions, fixtures and fittings and movable items contained in the property are for guidance only. Our clients may instruct us to set a closing date for offers at short notice and therefore if you wish to pursue interest in this property, you should immediately instruct your solicitor to note interest with us. Our clients reserve the right to conclude a bargain for the sale of the above subjects or any part thereof ahead of a notified closing date and will not be obliged to accept either the highest or indeed any offer for the above subjects or any part thereof. All measurements have been taken using a sonic tape and cannot be regarded as guaranteed given the limitations of the device. Services and/or appliances referred to in these particulars have not been tested and no warranty is given that they are in full working order.