

Blackadders

Offers Over £115,000








blackadders.co.uk

59 Kinneff Crescent,
Dundee, DD3 9RG



- Mid Terraced Villa
- Established Location
- Living Room
- Kitchen
- 2 Double Bedrooms
- Shower Room
- Double Glazing
- Electric Heating
- Garden

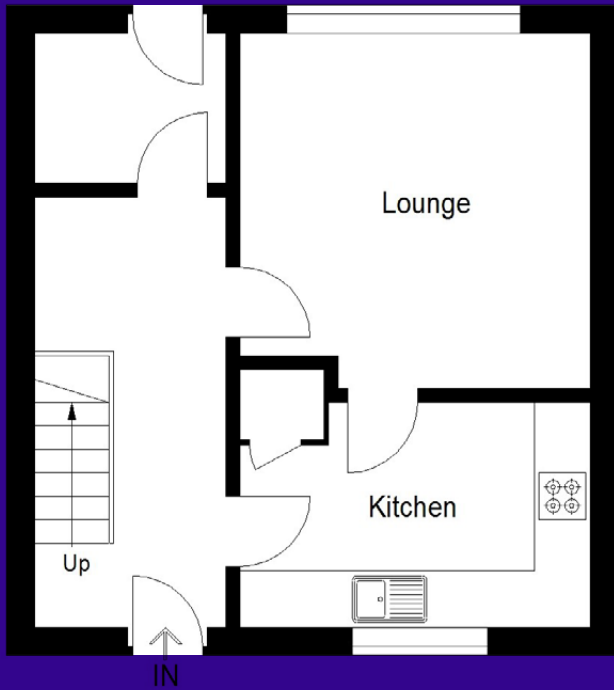
	2
	1
	1
	D
	B



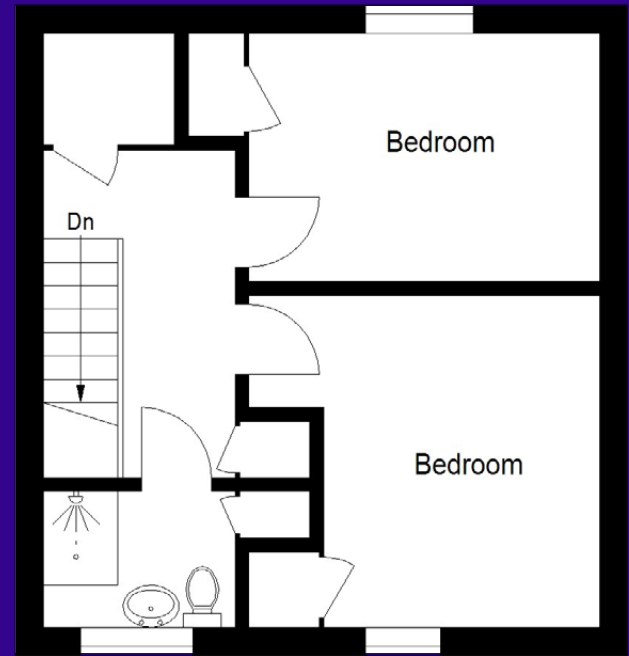
A well-proportioned two bedroom mid terraced villa located in an established residential area to the north of Dundee. The immediate area is well served by local shops and services while the city centre is within easy reach offering a range of major facilities. A bus route is located nearby while other transport links can be found in the city centre. Schooling at primary and secondary levels are within easy reach.

The property benefits from double glazing and electric heating. The accommodation is accessed by an entrance hall with stairs leading to the upper level. The living room enjoys natural light from an east facing window which extends to floor level. The kitchen has a range of fitted units while having a west facing aspect. There is also a rear hall located on the ground floor.





Ground Floor



First Floor

Accommodation (measurements are approx)

Living Room	4.19m x 4.01m	(13'9" x 13'2")
Kitchen	4.03m x 2.15m	(13'3" x 7'1")
Bedroom 1	4.02m x 2.93m	(13'2" x 9'7")
Bedroom 2	3.40m x 3.16m	(11'2" x 10'4")
Shower Room	2.03m x 1.66m	(6'8" x 5'5")

The upper landing gives access to the two double bedrooms and the shower room. Each bedroom has fitted storage space as well as storage accessed from the landing.

The garden ground lies to the west side of the property and is laid in paving.



Aberdeen

6 Bon Accord
Square, Aberdeen
AB11 6XU

Tel: 01224 452750

Dundee

30 & 34 Reform Street
Dundee
DD1 1RJ

Tel: 01382 342222

DISCLAIMER. Entry by mutual arrangement. Viewing strictly through selling agents. Whilst we endeavour to make these particulars as accurate as possible, they do not form any part of any contract or offer nor are they guaranteed. Measurements are approximate and in most cases are taken with a digital tape. If there is any part of these particulars that you find misleading or simply wish clarification on, please contact our office for assistance.

property@blackadders.co.uk