



MML Law

MMLLAW.CO.UK

MMLLAW.CO.UK

01382 206000

property@mmlaw.co.uk

01382 206000 DUNDEE CITY | ANGUS | FIFE

25 Roseberry Street, Dundee, DD2 2NP

Offers Over £150,000



"Mid-Terraced Two Storey Villa"

Accommodation: Entrance Hall, Lounge, Dining Kitchen, 2 Double Bedrooms, Study and Bathroom, Double Glazing, Gas Central Heating, Gardens.



DUNDEE CITY | ANGUS | FIFE

25 Roseberry Street, Dundee, DD2 2NP

Description

Mid-terraced two storey villa situated in a quiet residential cul-de-sac. This property offers spacious accommodation and would be ideal for a young family looking to move up the property ladder. Practice benefits include gas central heating and double glazing throughout.

The accommodation comprises at ground floor level, Entrance Hall with under-stair storage, lounge offering comfortable living space. Modern fitted kitchen with integrated gas hob, double oven and dishwasher. Further storage cupboards and access to the rear garden. Ample space for dining table and chairs.

On the upper level there are two double bedrooms with fitted wardrobes and a study which provides access to the attic space. Family bathroom with three-piece white suite and mains shower over the bath.

Outside

To the front is a small courtyard type garden bounded by a brick retaining wall.

Garden at the rear comprises a lawn bounded by brick retainers and timber fencing.

To the front of the terrace are unallocated parking spaces for the residents within the development.

Beyond the site to the rear is a mutual amenity courtyard. There is an electric point outside at the back and an outside tap.

Area

The property is located to the north-west of Dundee City Centre and has local amenities which include schools, shops, parks and public transport within easy reach.

Included In Sale

Carpets, floor coverings, gas hob and double oven and dishwasher. Outside shed which has electric.



25 Roseberry Street, Dundee, DD2 2NP



DUNDEE CITY | ANGUS | FIFE

25 Roseberry Street, Dundee, DD2 2NP

Viewing

Contact Solicitors for an appointment to view on 01382 206000. Alternatively for evenings and weekends telephone 07976 589476.

Home Report

Contact Solicitors for a copy of the Home Report.

Accommodation

Lounge	15' x 10'7"
Dining Kitchen	13'11" x 9'9"
Bedroom 1	11'1" x 10'7"
Bedroom 2	11'2" x 10'8"
Study	5'9" x 4'12"
Bathroom	6'7" x 6'2"



DUNDEE CITY | ANGUS | FIFE

25 Roseberry Street, Dundee, DD2 2NP



MML Law

DUNDEE CITY | ANGUS | FIFE

25 Roseberry Street, Dundee, DD2 2NP

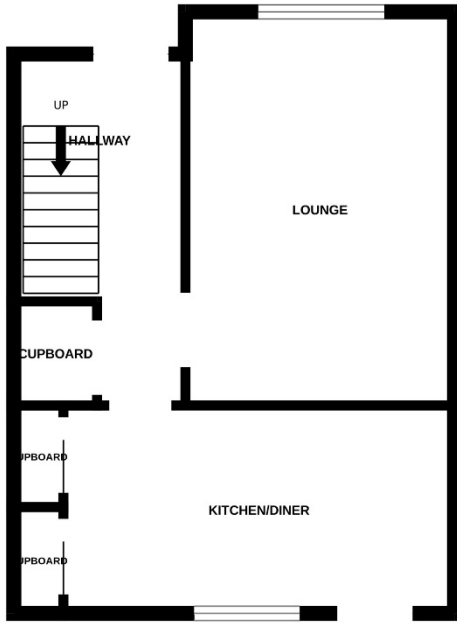


MML Law

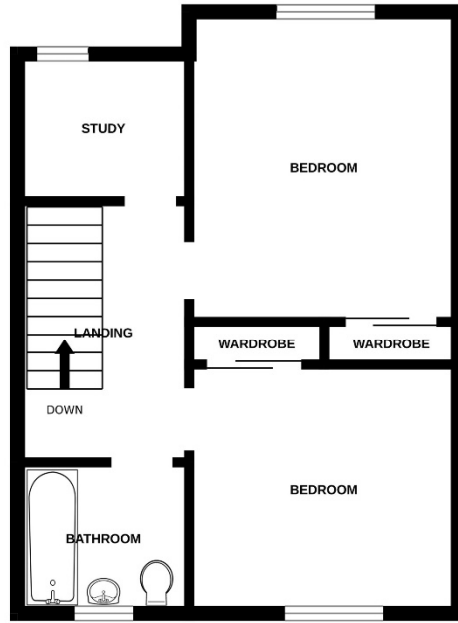
DUNDEE CITY | ANGUS | FIFE

25 Roseberry Street, Dundee, DD2 2NP

GROUND FLOOR



1ST FLOOR



Whilst every attempt has been made to ensure the accuracy of the floorplan contained here, measurements of doors, windows, rooms and any other items are approximate and no responsibility is taken for any error, omission or mis-statement. This plan is for illustrative purposes only and should be used as such by any prospective purchaser. The services, systems and appliances shown have not been tested and no guarantee as to their operability or efficiency can be given.
Made with Metropix ©2024





MML Law

MMLLAW.CO.UK

01382 206000

property@mmlaw.co.uk
DUNDEE CITY | ANGUS | FIFE