

Offers Over £145,000







- Mid Terraced Villa
- Dining Kitchen
- Double Glazing
- Established Location
- 3 Bedrooms
- Electric Heating
- Lounge
- Bathroom
- Gardens



3



1



1



E



B

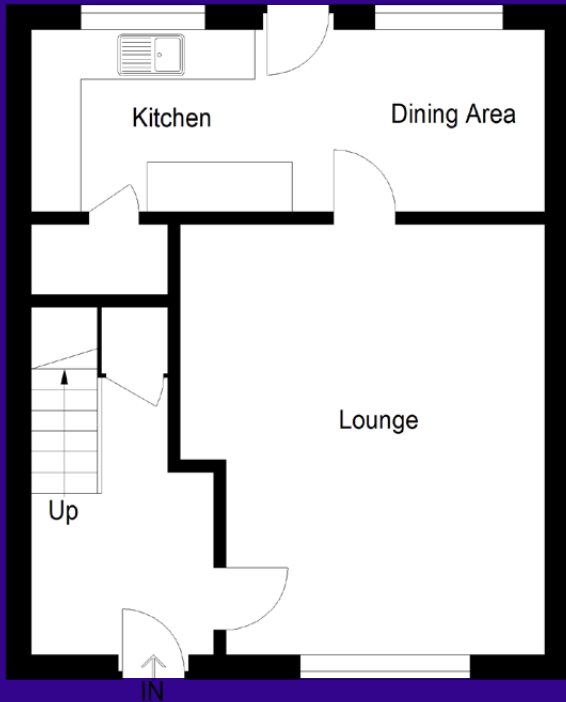


This is an attractive mid-terraced villa affording comfortable family accommodation on two levels. The property is pleasantly located within a mature and established residential area of similar properties situated close to local schooling.

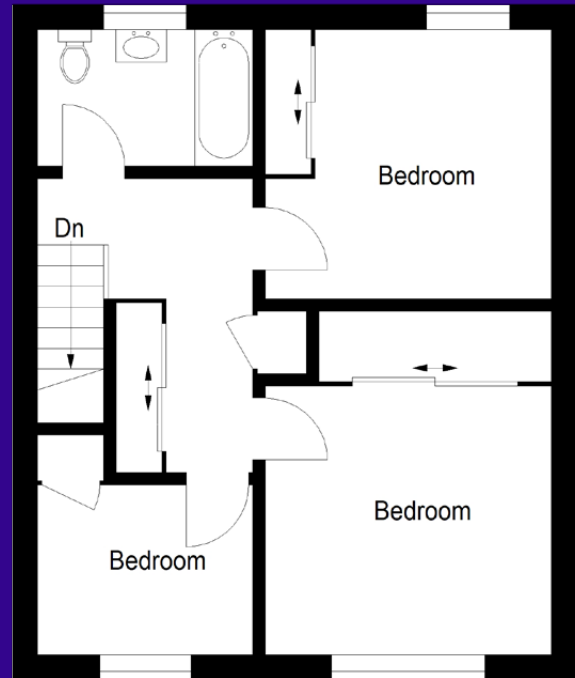
The subjects comprise on ground floor level: hallway, spacious lounge and a well-equipped dining kitchen. On the upper level there are three bedrooms and bathroom. The kitchen is well-equipped with fitted wall and floor storage with integrated hob and oven and provides ample room for a table and chairs. The lounge is well proportioned and on the upper level the three bedrooms (two to the front and one to the rear) provide good family accommodation. The bathroom has a three-piece white suite with instant shower. Electric heating is installed backed-up by double glazing.







Ground Floor



First Floor

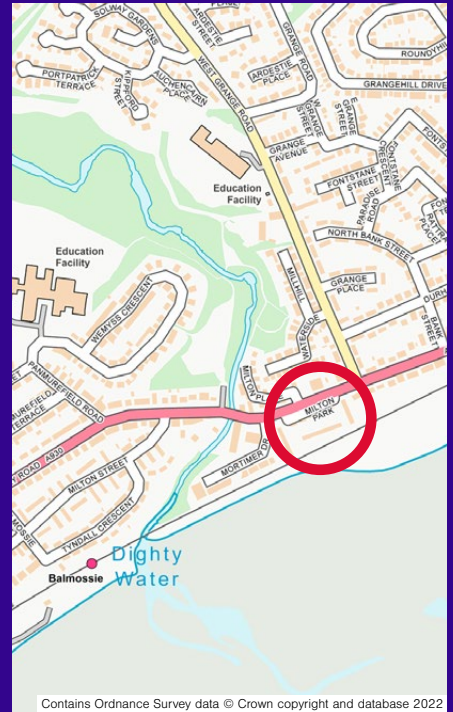
## Accommodation (measurements are approx)

Lounge	4.92m x 3.86m	(16'2" x 12'8")
Dining Kitchen	2.88m x 5.31m	(9'5" x 17'5")
Bedroom 1	3.70m x 2.66m	(12'2" x 8'9")
Bedroom 2	3.55m x 2.72m	(11'8" x 8'11")
Bedroom 3	2.50m x 2.49m	(8'2" x 8'2")
Bathroom	1.98m x 1.75m	(6'6" x 5'9")

To the front of the property there is an attractive area of garden with neat lawn, patio and terrace with the rear garden comprising a drying green bounded by a timber fence. There is also a useful brick built tool shed and store.

This is an attractive and deceptively spacious house making viewing essential.





Contains Ordnance Survey data © Crown copyright and database 2022

### Aberdeen

37 Langstane Place  
Aberdeen  
AB11 6EN

Tel: 01224 452750

### Dundee

30 & 34 Reform Street  
Dundee  
DD1 1RJ

Tel: 01382 342222

DISCLAIMER. Entry by mutual arrangement. Viewing strictly through selling agents. Whilst we endeavour to make these particulars as accurate as possible, they do not form any part of any contract or offer nor are they guaranteed. Measurements are approximate and in most cases are taken with a digital tape. If there is any part of these particulars that you find misleading or simply wish clarification on, please contact our office for assistance.

[property@blackadders.co.uk](mailto:property@blackadders.co.uk)