

Kellas Mews (including
Pitkerro Mill Gardens)
Kellas Road
Broughty Ferry
DD5 3NX

Kellas Mews

| Plot | Type | No of Beds | Price |
|-------------|--------------------------|-------------------|----------------------|
| 1 | A (220.3m ²) | 4 Bed Detached | Fixed Price £565,000 |
| 2 | B (220.3m ²) | 4 Bed Detached | Fixed Price £565,000 |
| 3 | A (220.3m ²) | 4 Bed Detached | Fixed Price £565,000 |
| 4 | A (220.3m ²) | 4 Bed Detached | Fixed Price £565,000 |
| 5 | B (220.3m ²) | 4 Bed Detached | Fixed Price £565,000 |

Pitkerro Mill Gardens

| Plot | Type | No of Beds | Price |
|-------------|--------------------------|-------------------|----------------------|
| 8 | E (210.8m ²) | 5 Bed Detached | Fixed Price £535,000 |

“Enhanced Efficiency & Design Review”

The Project:

Kellas Mews by Harbyn is a lovely and unique development of eight (four/five bed) homes in the heart of the countryside. Close to all amenities and in an ideal location.

Harbyn Properties:

Harbyn Properties are a local high quality property development company.

Factor Fee £800per year(TBC) | Reservation Fee £2000 | Freehold

03330 430090

thorntons-property.co.uk

KELLAS MEWS

BROUGHTY FERRY

A LUXURY DEVELOPMENT
by




Revision B2402. Images are for illustration purposes only, and exact spec will vary.



BROCHURE INDEX



| <u>Description</u> | <u>Page/s</u> |
|---|---------------|
| Plots 1, 3 and 4 floor plans | 3 – 5 |
| Plots 2 and 5 floor plans (opposite handing) | 6 – 8 |
| Plot 6 floor plans | 9 – 11 |
| Plots 1 & 2 Kitchen Choices | 12 – 14 |
| Plot 3 Kitchen Design | 15 – 16 |
| Plot 4 Kitchen Design | 17 – 18 |
| Plot 5 Kitchen Design | 19 – 20 |
| Plot 6 Kitchen Design | 21 – 22 |
| General Kitchen Specification | 23 |
| General Bathroom/En-suite Specification and Choices | 24 -25 |
| Homes Typical Specification | 26 |
| Site Plan | 27 |



1, 3 & 4 KELLAS MEWS
4/5 BED, 3 BATH & WC'
KITCHEN/LIVING/DINING
GARAGE AND UTILITY



GROUND FLOOR PLAN – PLOTS 1, 3 and 4 sizes and floor plans.

| Room | Metric | Imperial |
|----------------------|------------------|----------------------|
| Living/Dining | 7.4 x 5.6 | 18'4" x 24'2" |
| Kitchen | 2.7 x 5.6 | 8'9" x 18'4" |
| Utility | 2.7 x 2.6 | 8'9" x 8'5" |
| WC | 2.3 X 1.1 | 7'5" x 3'6" |
| Garage | 6.2 x 5.4 | 20'3" x 17'7" |

Gross Internal Ground Floor (inc Garage) 115.9 sq.m

Revision B2402. Images are for illustration purposes only and exact spec will vary. Plans are not to scale and sizes are approximate.



FIRST FLOOR PLAN – PLOTS 1, 3 & 4. Gross Internal First Floor 104.4 sq.m. TOTAL GROSS 220.3 sq.m.

| Room | Metric | Imperial | Room | Metric | Imperial |
|-----------------|-----------|---------------|--------------|-----------|---------------|
| Bedroom 01 | 4.7 x 3.7 | 15'4" x 12'1" | Bedroom 02 | 3.7 x 4.2 | 12'1" x 13'8" |
| En-suite 01 | 1.7 x 2.4 | 5'6" x 7'9" | En-suite 02 | 1.9 x 2.1 | 6'2" x 6'9" |
| Family Bathroom | 1.7 x 2.4 | 5'6" x 7'9" | Study Bed 05 | 2.1 x 3.1 | 6'9" x 10'2" |
| Bedroom 03 | 4.2 x 3.6 | 13'8" x 11'8" | Bedroom 04 | 3.6 x 4.5 | 11'8" x 14'8" |

Revision B2402. Images are for illustration purposes only and exact spec will vary. Plans are not to Scale and sizes are approximate.



2 & 5 KELLAS MEWS
4/5 BED, 3 BATH & WC
KITCHEN/LIVING/DINING
GARAGE AND UTILITY

Revision B2402. Images are for illustration purposes only, and exact spec will vary.



GROUND FLOOR PLAN – PLOT 2.

| Room | Metric | Imperial |
|---|-----------|-------------------|
| Living/Dining | 7.4 x 5.6 | 18'4" x 24'2" |
| Kitchen | 2.7 x 5.6 | 8'9" x 18'4" |
| Utility | 2.7 x 2.6 | 8'9" x 8'5" |
| WC | 2.3 X 1.1 | 7'5" x 3'6" |
| Garage | 6.2 x 5.4 | 20'3" x 17'7" |
| Gross Internal Ground Floor (inc Garage) | | 115.9 sq.m |

Revision B2402. Images are for illustration purposes only and exact spec will vary. Plans are not to scale and sizes are approximate.

Please note Plots 2 & 5 are handed in the opposite way to the above image. So, the Garage will be on the left side of the plan and Living/Dining on the right.



| FIRST FLOOR PLAN – PLOT 2. | | | Gross Internal First Floor 104.4 sq.m. TOTAL GROSS 220.3 sq.m. | | |
|----------------------------|-----------|---------------|--|-----------|---------------|
| Room | Metric | Imperial | Room | Metric | Imperial |
| Bedroom 01 | 4.7 x 3.7 | 15'4" x 12'1" | Bedroom 02 | 3.7 x 4.2 | 12'1" x 13'8" |
| En-suite 01 | 1.7 x 2.4 | 5'6" x 7'9" | En-suite 02 | 1.9 x 2.1 | 6'2" x 6'9" |
| Family Bathroom | 1.7 x 2.4 | 5'6" x 7'9" | Study Bed 05 | 2.1 x 3.1 | 6'9" x 10'2" |
| Bedroom 03 | 4.2 x 3.6 | 13'8" x 11'8" | Bedroom 04 | 3.6 x 4.5 | 11'8" x 14'8" |

Revision B2402. Images are for illustration purposes only and exact spec will vary. Plans are not to Scale and sizes are approximate.

Please note Plots 2 & 5 are handed in the opposite way to the above image.



Revision B2402. Images are for illustration purposes only, and exact spec will vary.

6 KELLAS MEWS
4/5 BED, 3 BATH & WC
KITCHEN/LIVING/DINING
GARAGE AND UTILITY



GROUND FLOOR PLAN – PLOT 6:

| Room | Metric | Imperial |
|--|-------------------|---------------|
| Living/Dining | 7.4 x 4.8 | 15'7" x 24'3" |
| Kitchen | 2.7 x 5.2 | 8'9" x 17'1" |
| Utility | 2.7 x 2.6 | 8'9" x 8'6" |
| WC | 2.3 X 1.1 | 7'5" x 3'6" |
| Garage (large single) | 6.2 x 5.0 | 20'3" x 16'4" |
| Gross internal Ground (inc Garage) | = 106.4sqm | |
| Total Gross Internal Floor Area | = 201.9sqm | |

Revision B2402. Images are for illustration purposes only and exact spec will vary. Plans are not to scale and sizes are approximate.



| FIRST FLOOR PLAN – PLOT 6. | | | Gross Internal First Floor 104.4 sq.m. TOTAL GROSS 201.9 sq.m. | | |
|----------------------------|-----------|---------------|--|-----------|---------------|
| Room | Metric | Imperial | Room | Metric | Imperial |
| Bedroom 01 | 4.2 x 3.7 | 13'8" x 12'1" | Bedroom 02 | 3.1 x 3.6 | 10'2" x 11'8" |
| En-suite 01 | 1.7 x 2.4 | 5'6" x 7'9" | En-suite 02 | 1.9 x 2.1 | 6'2" x 6'9" |
| Family Bathroom | 1.7 x 2.4 | 5'6" x 7'9" | Study Bed 05 | 2.1 x 3.1 | 6'9" x 10'2" |
| Bedroom 03 | 2.9 x 3.6 | 9'5" x 11'8" | Bedroom 04 | 3.6 x 3.9 | 11'8" x 12'8" |

Revision B2402. Images are for illustration purposes only and exact spec will vary. Plans are not to Scale and sizes are approximate.

KITCHEN CHOICES & OPTIONS

PLOTS 1 & 2



Images are artists impressions, and for illustration purposes only

Kitchen colours and worktop choices are only available if reservations dates are met.

**HIGH
SPECIFICATION
GERMAN
KITCHEN
WITH A CHOICE
OF COLOURS**

**QUARTZ STONE
WORKTOP WITH
FURTHER
COLOUR
CHOICES.**





GERMAN KITCHEN & UTILITY PLOT 3

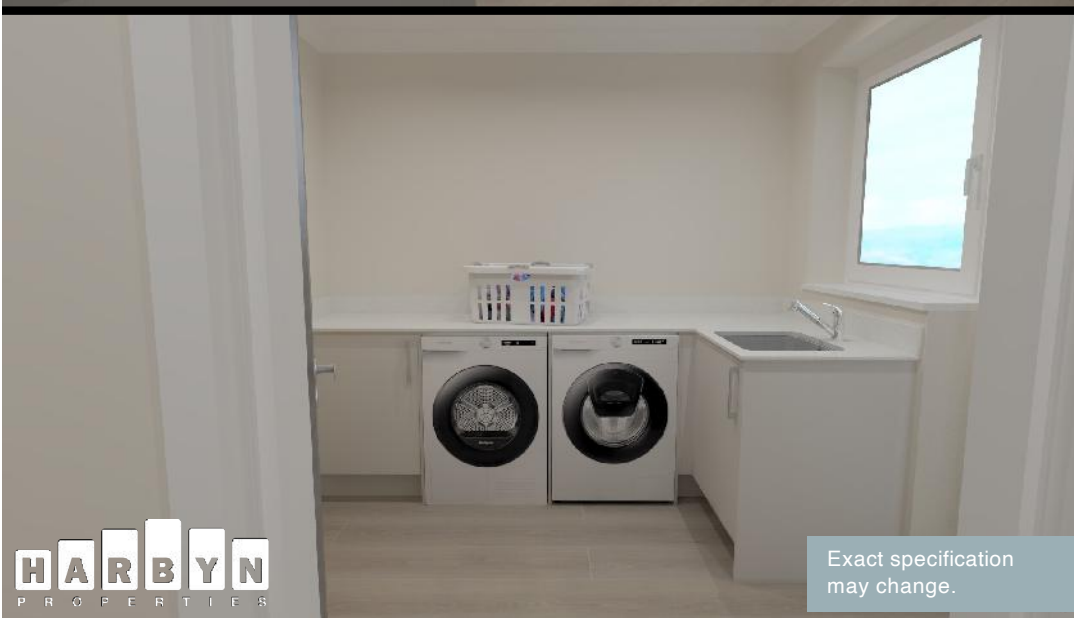


Images are artists impressions, and for illustration purposes only

**PLOT 3
HIGH
SPECIFICATION
GERMAN
KITCHEN.**

**QUARTZ STONE
WORKTOP.**

Exact specification
may change.

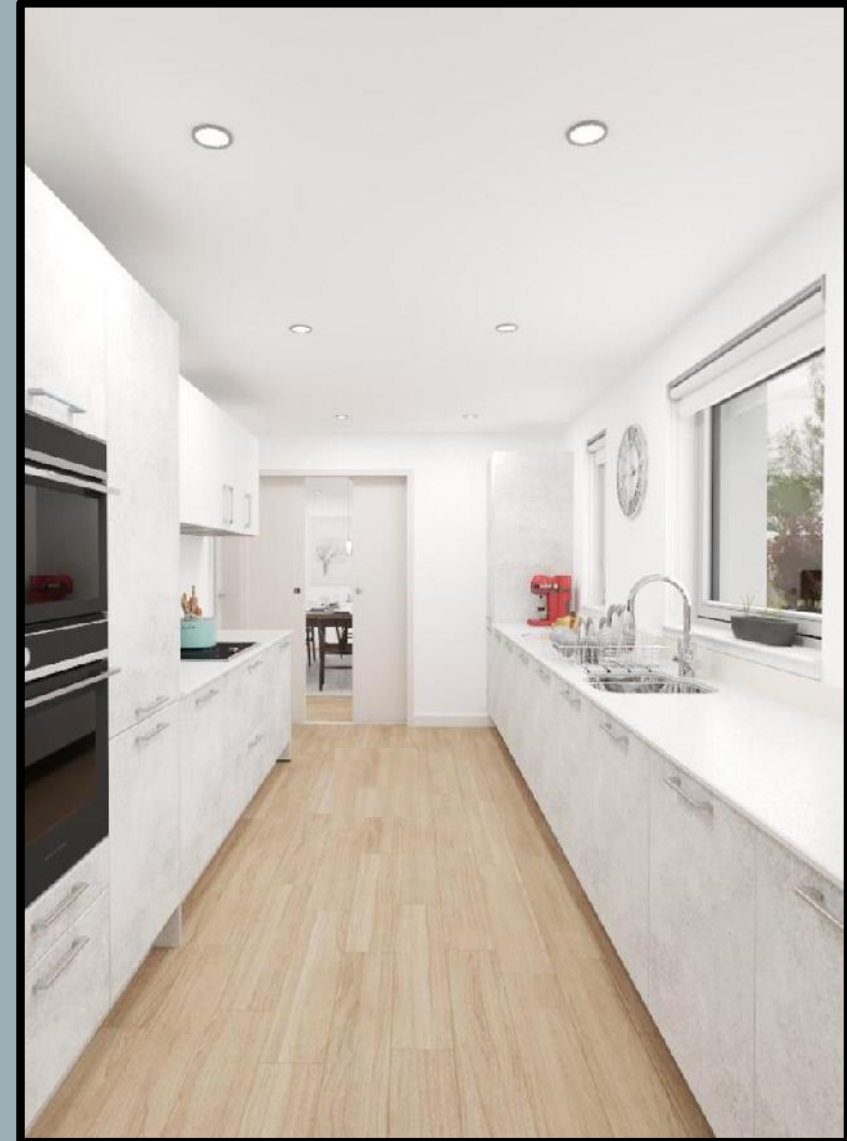


Exact specification
may change.



Images are artists
impressions, and for
illustration purposes only

GERMAN KITCHEN & UTILITY PLOT 4





**PLOT 4
HIGH
SPECIFICATION
GERMAN
KITCHEN.**

**QUARTZ STONE
WORKTOP.**



Images are artists impressions, and for illustration purposes only

Exact specification may change.

GERMAN KITCHEN & UTILITY PLOT 5

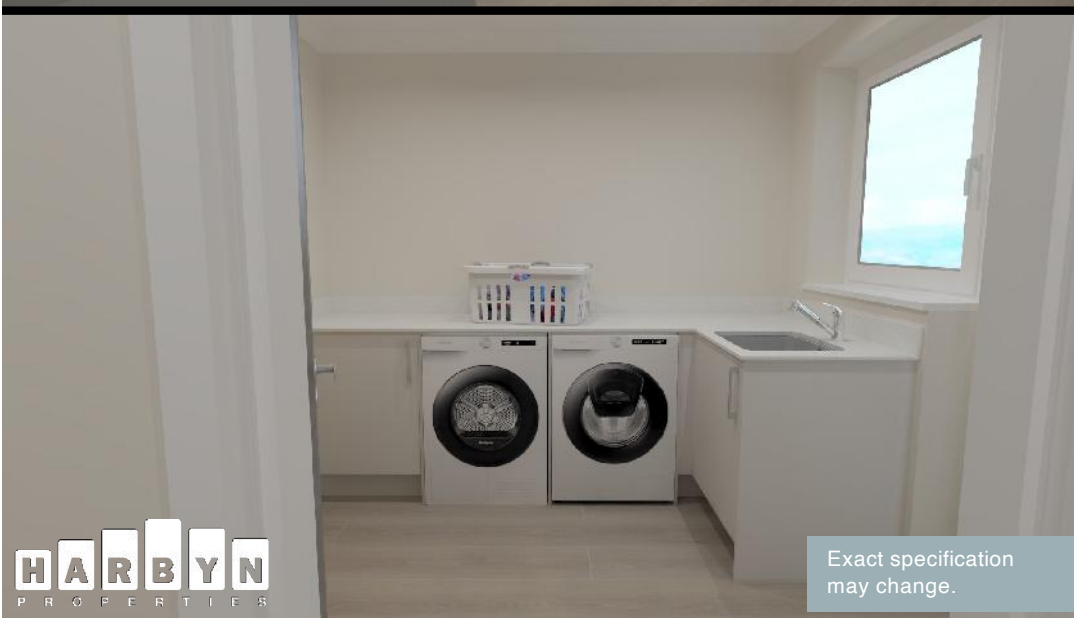


Images are artists impressions, and for illustration purposes only

**PLOT 5
HIGH
SPECIFICATION
GERMAN
KITCHEN.**

**QUARTZ STONE
WORKTOP.**

Exact specification
may change.



Exact specification
may change.



Images are artists
impressions, and for
illustration purposes only

GERMAN KITCHEN & UTILITY PLOT 6



Revision B2402. Images are for illustration purposes only, and exact spec will vary.

Images are artists impressions, and for illustration purposes only

**PLOT 6
HIGH
SPECIFICATION
GERMAN
KITCHEN.**

**QUARTZ STONE
WORKTOP.**



Exact specification may change.



Exact specification may change.



Images are artists impressions, and for illustration purposes only

HIGH QUALITY GERMAN KITCHEN, WITH HOTPOINT APPLIANCES (ALL PLOTS).

KITCHEN CHOICES*

- CUPBOARD COLOUR/S
- WORK TOP COLOUR
- SPLASHBACK COLOUR

KITCHEN STANDARD EQUIPMENT:

HIGH QUALITY GERMAN KITCHENS.

- FRIDGE & FREEZER
- HOB & EXTRACTOR
- OVEN & OVEN/MICRO COMBI
- DISHWASHER
- WINE FRIDGE.
- 4 IN 1 WATER TAP

EXTENDED WARRANTY ON APPLIANCES.

*CHOICES ARE ONLY AVAILABLE WITHIN A
SPECIFIC TIMESCALE WHEN MAKING A
RESERVATION.

KITCHEN OPTIONS:

- WASHING MACHINE
- TUMBLE DRIER
- BIN STORAGE
- WASTE DISPOSAL



Images are artists
impressions, and for
illustration purposes only

**BATHROOMS &
EN-SUITES
(ALL PLOTS).**



**GREAT SELECTION* OF
PORCELAIN TILES TO
CHOOSE FROM.**

**BATHROOMS AND ENSUITES
WILL BE FULLY TILED.**

***SELECTIONS BASED ON DATE OF
RESERVATION.**

BATHROOMS & EN-SUITES



Revision B2402. Images are for illustration purposes only, and exact spec will vary.

Kellas Mews

TYPICAL SPECIFICATION

Construction:

High Quality Timber Frame.
High Efficiency Glazed Windows and Doors.
New Generation, Efficient Air Source Heat Pumps, with Water Cylinder.
Ground Floor, Under Floor Heating.
High Performance Solar PV.
Award Winning Construction Partners.
Energy Efficient Specification (A Rated).
Luxury German Door Sets.

Kitchen:

High Quality German Base and Wall Units.
High Grade Worktop, and Splashbacks (quartz).
Integrated Appliances: Oven, Combi Oven/Microwave, Induction Hob,
Extractor, Dishwasher, Fridge & Freezer, Wine Fridge,
and 4 in 1 Boiling Water Tap.

Floor Coverings:

Choice of Flooring to Downstairs Areas*.
Carpets to Bedrooms and Stairs.
Tiles to Bathrooms, WC's and En-Suites*.

General:

Properties will be covered by a 10-year Collateral Warranty Package (Global Home Warranties).

Paved Patio and Paths.
Timber Fencing.
Communal Factoring Agreement in Place.
Mono-Bloc Driveway.

Services:

Intruder Alarm.
Integrated Smoke and Heat Detectors.
Telephone and Television Wiring Provision.
Fibre Wiring Provision.
Car Charging Station, with Battery Provision 5KW included.
Integrated Garage with Remote Operation Electric Door.

Bathroom and En-Suites:

High Quality Sanitary Ware and Fittings.
Fully Tiled.
Electric Towel Rail Radiators.
Mirror and LED Downlighters.
Integrated Storage.

Choices (dependent on date of reservation):

Carpet Colour/s.
Kitchen Worktop Colour.
Kitchen Units Colour/s.
Bathroom Tiling Colour/s.

*All information is accurate at time of printing but is liable to change.

**Choices can only be made depending on programme, and reservation dates.

***Harbyn cannot be held responsible for changes of specification or grade by manufacturers.

Site Plan

Kellas Mews by



Kellas Mews

| | | |
|---------|---|------------|
| Plot 01 | - | 220.3 sq.m |
| Plot 02 | - | 220.3 sq.m |
| Plot 03 | - | 220.3 sq.m |
| Plot 04 | - | 220.3 sq.m |
| Plot 05 | - | 220.3 sq.m |
| Plot 06 | - | 201.9 sq.m |

Pitkerro Mill Gardens

| | | |
|---------|---|------------|
| Plot 07 | - | 164.8 sq.m |
| Plot 08 | - | 210.8 sq.m |

INCORPORATING
PITKERRO MILL GARDENS



A LUXURY DEVELOPMENT
BY



info@harbyn.co.uk
www.harbyn.co.uk

Pitkerro Mill Gardens

BROUGHTY FERRY

A LUXURY DEVELOPMENT
by



PLOT 7
4 BED HOME
164.8 SQ.M



PLOT 8
5 BED HOME
210.8 SQ.M

Pitkerro Mill Gardens is part of the larger Kellas Mews development by Harbyn Properties. These two beautifully designed homes are plots 7 & 8 on the Kellas Mews site.



BROCHURE INDEX

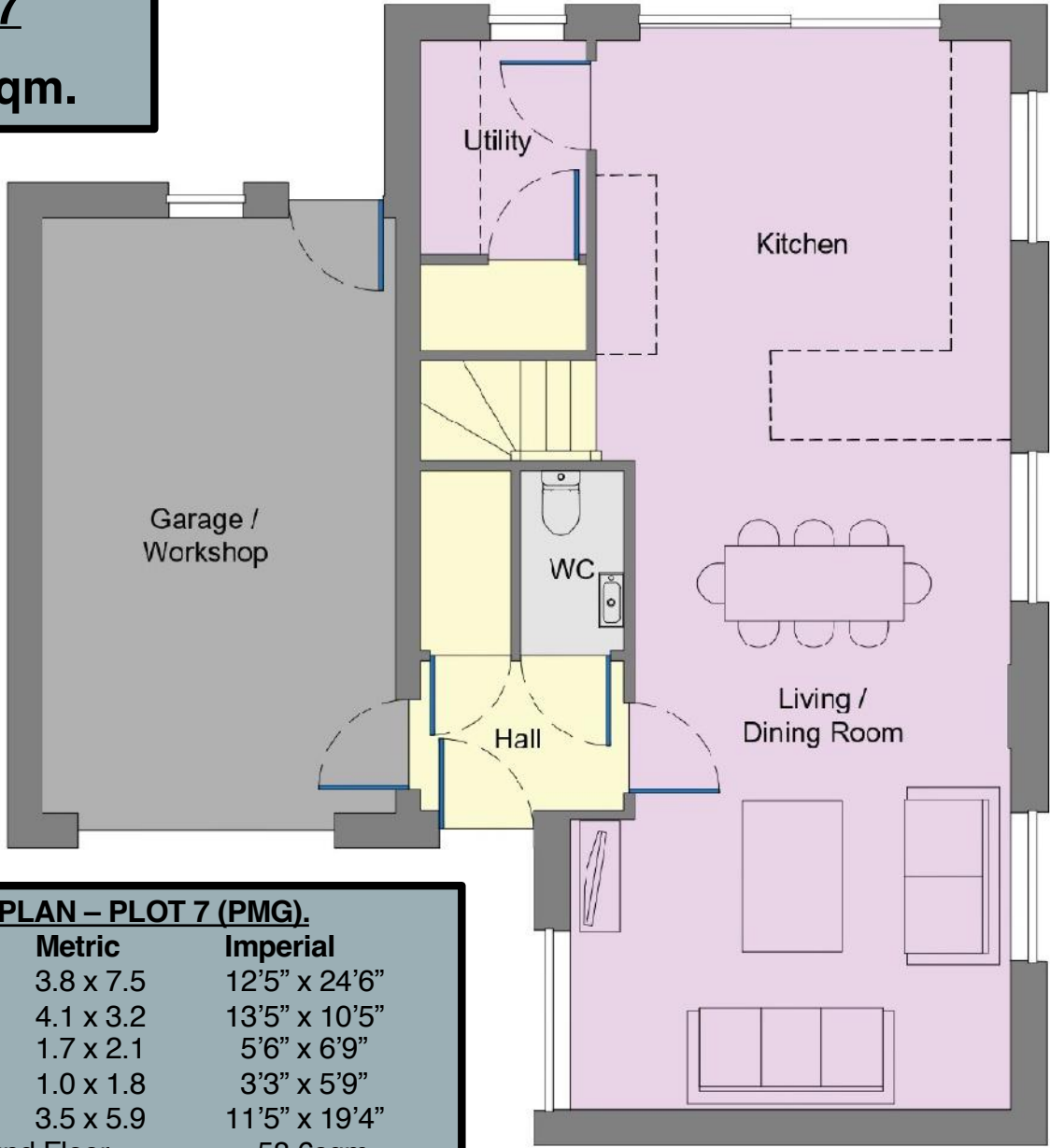


| <u>Description</u> | <u>Page/s</u> |
|---|---------------|
| Plot 7 | 3 |
| Plot 7 Ground Floor Layout | 4 |
| Plot 7 First Floor Layout | 5 |
| Plot 7 Kitchen Options and Choices | 6 – 9 |
| Plot 8 | 10 |
| Plot 8 Ground Floor Layout | 11 |
| Plot 8 First Floor Layout | 12 |
| Plot 8 Kitchen Options and Choices | 13 – 15 |
| Bathroom and En-Suite Options and Choices | 16 – 17 |
| Typical Specification | 18 |
| Site Plan | 19 |



PLOT 7
4 BED, 3 BATH & WC
KITCHEN/LIVING/DINING
GARAGE AND UTILITY

Plot 7
164.8 sqm.

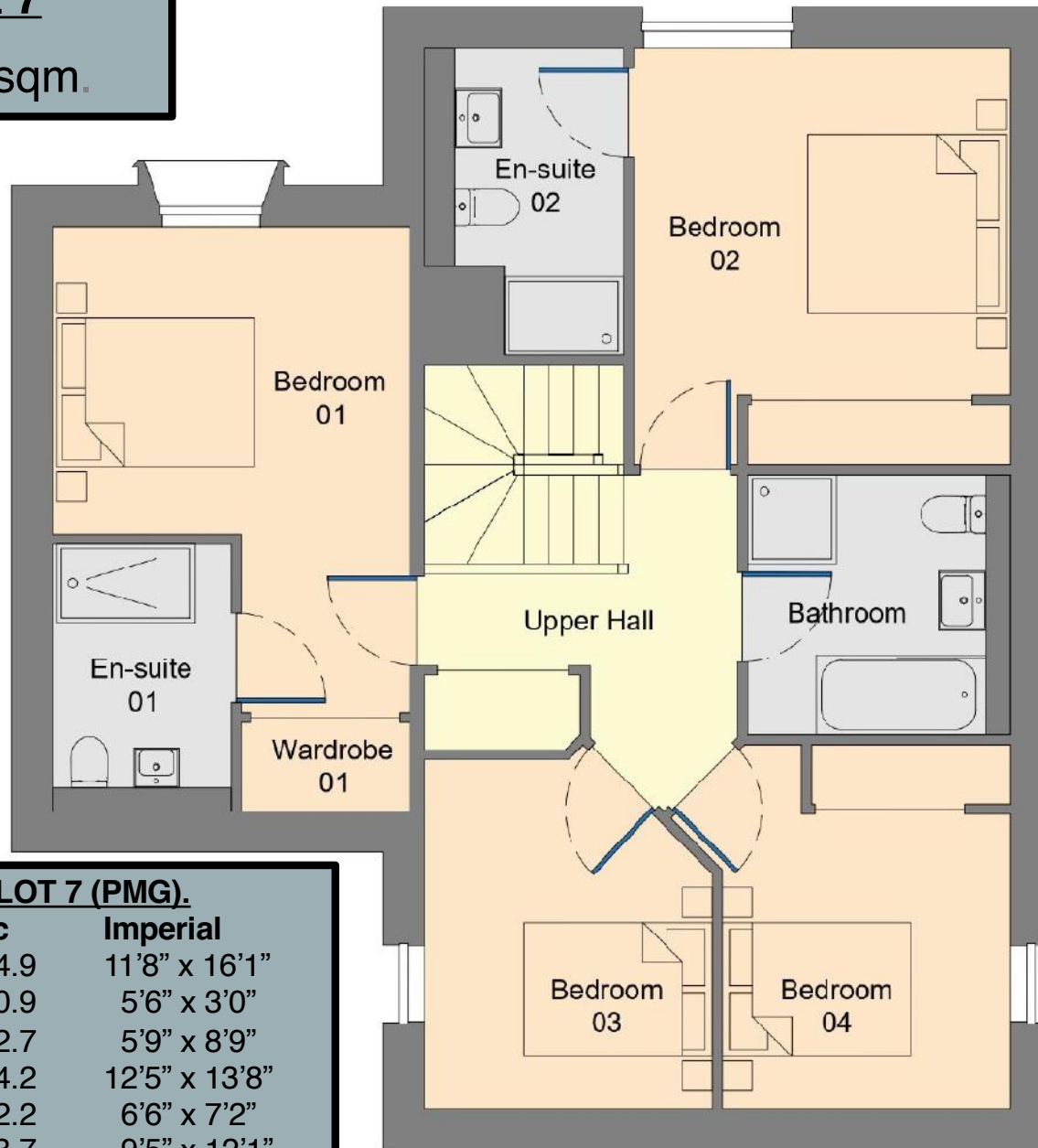


GROUND FLOOR PLAN – PLOT 7 (PMG).

| Room | Metric | Imperial |
|--|-----------|-------------------|
| Living/Dining | 3.8 x 7.5 | 12'5" x 24'6" |
| Kitchen | 4.1 x 3.2 | 13'5" x 10'5" |
| Utility | 1.7 x 2.1 | 5'6" x 6'9" |
| WC | 1.0 x 1.8 | 3'3" x 5'9" |
| Garage | 3.5 x 5.9 | 11'5" x 19'4" |
| Gross internal Ground Floor | | = 58.6sqm |
| Gross internal Ground (inc Garage) | | = 79.6sqm |
| Gross internal First Floor | | = 85.2sqm |
| Total Gross Internal Floor Area | | = 164.8sqm |

Plot 7

164.8 sqm.



FIRST FLOOR PLAN – PLOT 7 (PMG).

| Room | Metric | Imperial |
|---|-----------|---------------|
| Bedroom 01 | 3.6 x 4.9 | 11'8" x 16'1" |
| Wardrobe 01 | 1.7 x 0.9 | 5'6" x 3'0" |
| En-suite 01 | 1.8 x 2.7 | 5'9" x 8'9" |
| Bedroom 02 | 3.8 x 4.2 | 12'5" x 13'8" |
| En-suite 02 | 2.0 x 2.2 | 6'6" x 7'2" |
| Bedroom 03 | 2.9 x 3.7 | 9'5" x 12'1" |
| Bedroom 04 | 2.9 x 3.7 | 9'5" x 12'1" |
| Family Bathroom | 2.6 x 2.6 | 8'5" x 8'5" |
| Total Gross Internal Floor Area = 164.8sqm | | |

KITCHEN CHOICES AND OPTIONS



Images are artists impressions, and for illustration purposes only

KITCHEN VISUAL PLOT 7



Images are artists impressions, and for illustration purposes only

KITCHEN VISUAL PLOT 7



Utility Image,

Images are artists impressions, and for illustration purposes only

HIGH QUALITY GERMAN KITCHEN, WITH HOTPOINT APPLIANCES

KITCHEN, CHOICES*

- CUPBOARD COLOUR/S
- CUPBOARD FINISHES
- WORK TOP COLOUR
- SPLASHBACK COLOUR

KITCHEN, STANDARD

HIGH QUALITY GERMAN KITCHENS.

- FRIDGE & FREEZER
- HOB & EXTRACTOR
- OVEN & OVEN/MICRO COMBI
- DISHWASHER
- LIGHTING.

EXTENDED WARRANTY ON
APPLIANCES.

*CHOICES ARE ONLY AVAILABLE WITHIN A
SPECIFIC TIMESCALE WHEN MAKING A
RESERVATION.

KITCHEN, OPTIONS

- WINE FRIDGE
- WASHING MACHINE
- TUMBLE DRIER
- BIN STORAGE
- WASTE DISPOSAL



Images are artists
impressions, and for
illustration purposes only

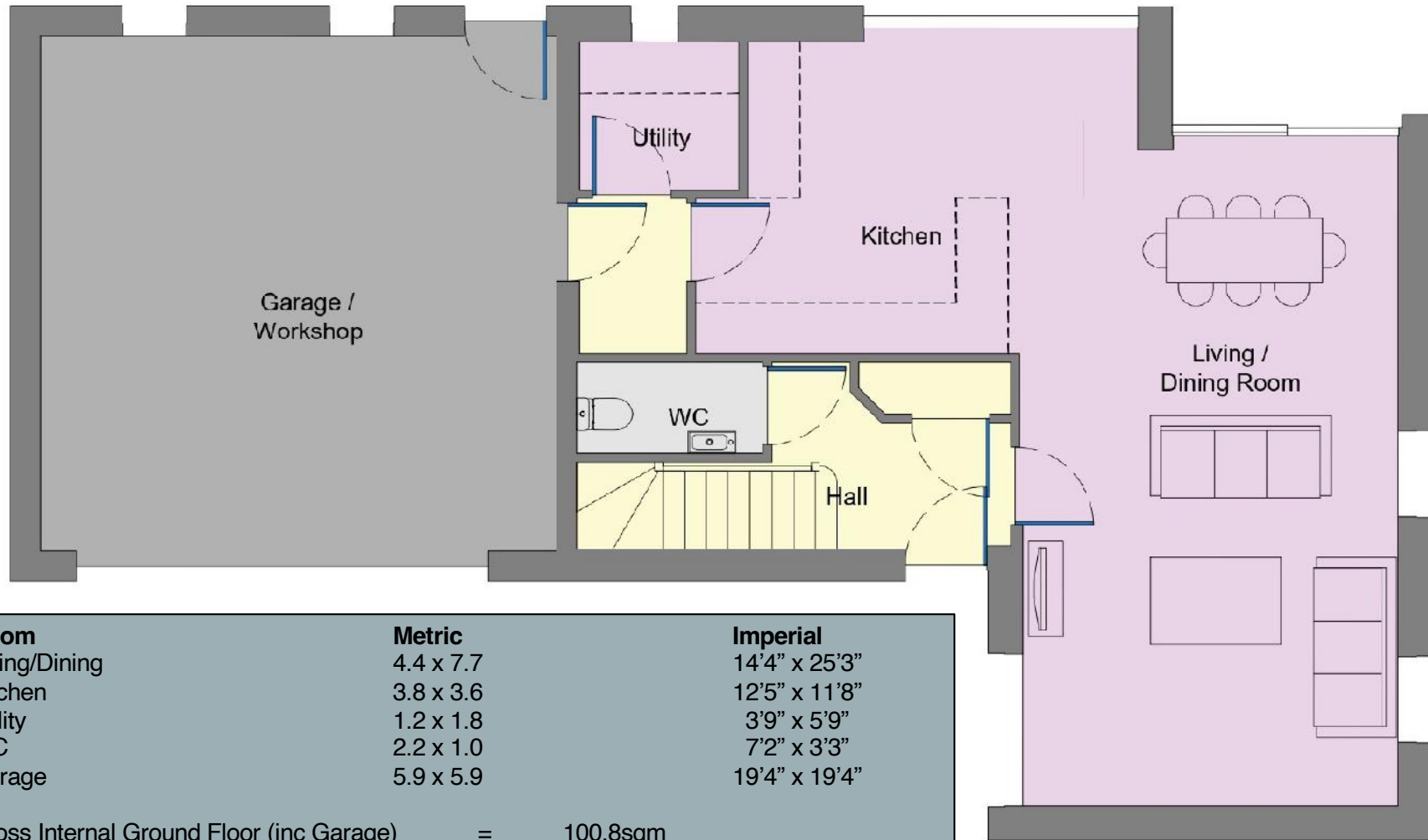


PLOT 8
5 BED, 2 BATH & WC
KITCHEN/LIVING/DINING
GARAGE AND UTILITY

Images are artists impressions, and for illustration purposes only. Materials and finishes are likely to change.

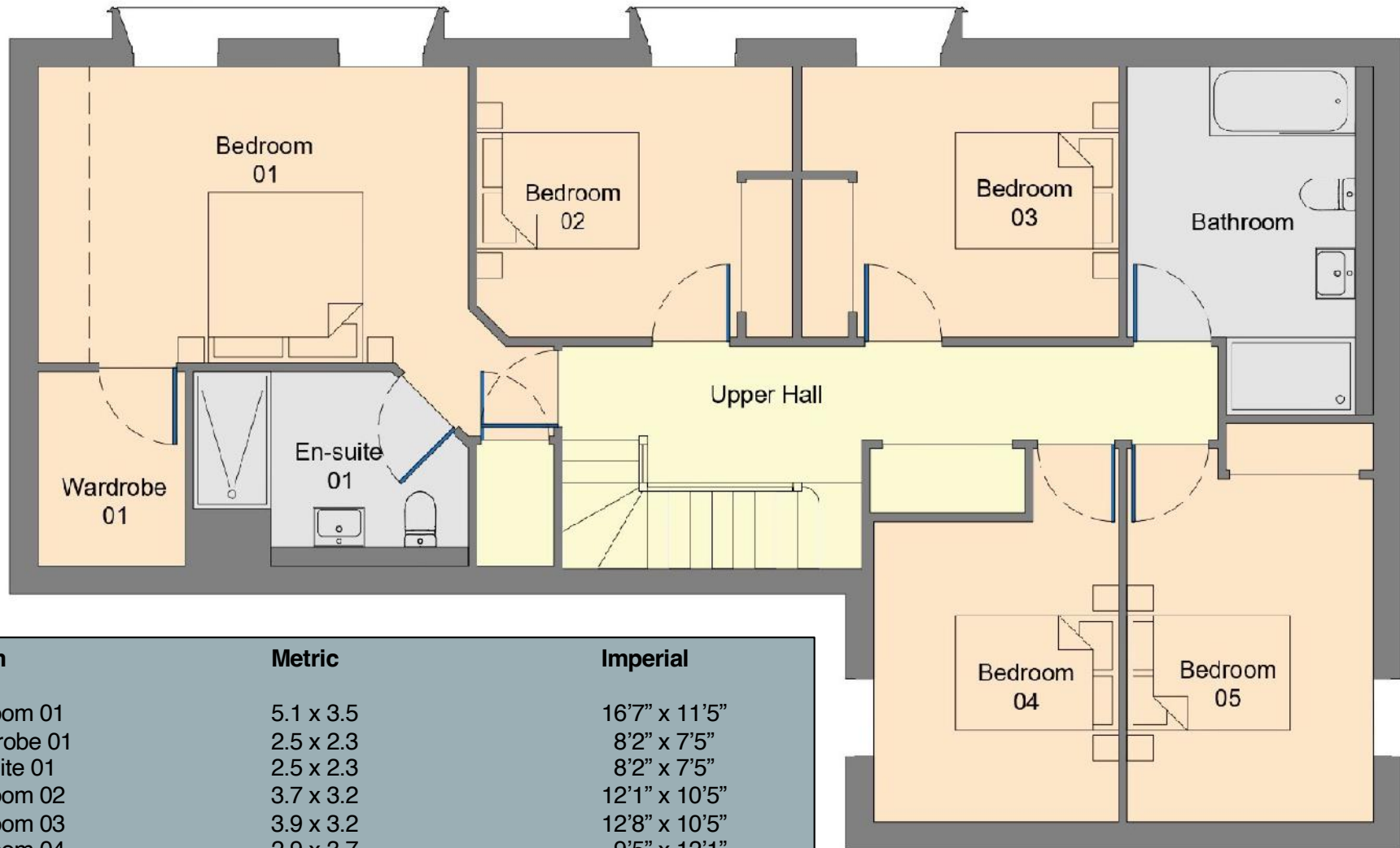
Revision B 2402 (image shows zinc roof, which will actually be tiled.)

PLOT 8 GROUND FLOOR PLAN



| Room | Metric | Imperial |
|--|-----------|-----------------|
| Living/Dining | 4.4 x 7.7 | 14'4" x 25'3" |
| Kitchen | 3.8 x 3.6 | 12'5" x 11'8" |
| Utility | 1.2 x 1.8 | 3'9" x 5'9" |
| WC | 2.2 x 1.0 | 7'2" x 3'3" |
| Garage | 5.9 x 5.9 | 19'4" x 19'4" |
| Gross Internal Ground Floor (inc Garage) | = | 100.8sqm |
| Gross Internal First Floor | = | 110.0sqm |
| Total Gross Internal Floor | = | 210.8sqm |

PLOT 8 GROUND FIRST FLOOR PLAN



| Room | Metric | Imperial |
|-----------------|-----------|---------------|
| Bedroom 01 | 5.1 x 3.5 | 16'7" x 11'5" |
| Wardrobe 01 | 2.5 x 2.3 | 8'2" x 7'5" |
| En-suite 01 | 2.5 x 2.3 | 8'2" x 7'5" |
| Bedroom 02 | 3.7 x 3.2 | 12'1" x 10'5" |
| Bedroom 03 | 3.9 x 3.2 | 12'8" x 10'5" |
| Bedroom 04 | 2.9 x 3.7 | 9'5" x 12'1" |
| Bedroom 05 | 2.9 x 4.4 | 9'5" x 14'4" |
| Family Bathroom | 2.9 x 3.2 | 9'5" x 10'5" |

KITCHEN VISUAL

PLOT 8



Images are artists impressions, and for illustration purposes only

KITCHEN PLOT 8



Images are artists impressions, and for illustration purposes only



Images are artists impressions, and for illustration purposes only



Images are artists impressions, and for illustration purposes only

HIGH QUALITY GERMAN KITCHENS WITH HOTPOINT APPLIANCES

KITCHEN, CHOICES*

- CUPBOARD COLOUR/S
- CUPBOARD FINISHES
- WORK TOP COLOUR
- SPLASHBACK COLOUR

KITCHEN, STANDARD

- FRIDGE & FREEZER
- HOB & EXTRACTOR
- OVEN
- OVEN/MICRO COMBI
- DISHWASHER
- 4 IN 1 WATER TAP

EXTENDED WARRANTY ON
APPLIANCES.

*CHOICES ARE ONLY AVAILABLE WITHIN A
SPECIFIC TIMESCALE WHEN MAKING A
RESERVATION.

KITCHEN, OPTIONS

- WINE FRIDGE
- BOILING WATER TAP
- WASHING MACHINE
- TUMBLE DRIER
- BIN STORAGE
- WASTE DISPOSAL



Images are artists
impressions, and for
illustration purposes only



**BATHROOMS/
ENSUITES**



Revision B2402. Images are for illustration purposes only, and exact spec will vary.



**TAPS, TILES
AND SHOWERS**



Pitkerro Mill Gardens

TYPICAL SPECIFICATION

Construction:

High Quality Timber Frame.
High Efficiency Glazed Windows and Doors.
New Generation, Efficient Air Source Heat Pumps, with Water Cylinder.
Ground Floor, Under Floor Heating.
High Performance Solar PV.
Award Winning Construction Partners.
Energy Efficient Specification (A Rated).
Luxury German Door Sets.

Kitchen:

High Quality German Base and Wall Units.
High Grade Worktop, and Splashbacks (quartz).
Integrated Appliances: Oven, Combi Oven/Microwave, Induction Hob,
Extractor, Dishwasher, Fridge & Freezer and 4in1 Boiling Water Tap.
Sliding Doors to Generous Gardens.

Floor Coverings:

Choice of Flooring to Downstairs Areas*.
Carpets to Bedrooms and Stairs.
Tiles to Bathrooms, WC's and En-Suites*.

General:

Properties will be covered by a 10-year Collateral Warranty Package (Global Home Warranties).

Paved Patio and Paths.

Fencing.

Communal Factoring Agreement in Place.

Mono-Bloc Driveway.

Services:

Intruder Alarm.
Integrated Smoke and Heat Detectors.
Telephone and Television Wiring Provision.
Fibre Wiring Provision.
Car Charging Station, with 5kw Battery Provision.
Integrated Garage with Remote Operation Electric Door.

Bathroom and En-Suites:

High Quality Sanitary Ware and Fittings.
Fully Tiled.
Electric Towel Rail Radiators.
Mirror and LED Downlighters.
Integrated Storage.

Choices (dependent on date of reservation):

Carpet Colour/s.
Kitchen Worktop Colour.
Kitchen Units Colour/s.
Bathroom Tiling Colour/s.

*All information is accurate at time of printing but is liable to change.

**Choices can only be made depending on programme, and reservation dates.

***Harbyn cannot be held responsible for changes of specification or grade by manufacturers.

Site Plan

Kellas Mews by



Kellas Mews

| | | |
|---------|---|------------|
| Plot 01 | - | 220.3 sq.m |
| Plot 02 | - | 220.3 sq.m |
| Plot 03 | - | 220.3 sq.m |
| Plot 04 | - | 220.3 sq.m |
| Plot 05 | - | 220.3 sq.m |
| Plot 06 | - | 201.9 sq.m |

Pitkerro Mill Gardens

| | | |
|---------|---|------------|
| Plot 07 | - | 164.8 sq.m |
| Plot 08 | - | 210.8 sq.m |

INCORPORATING
PITKERRO MILL GARDENS



A LUXURY DEVELOPMENT
BY



info@harbyn.co.uk
www.harbyn.co.uk