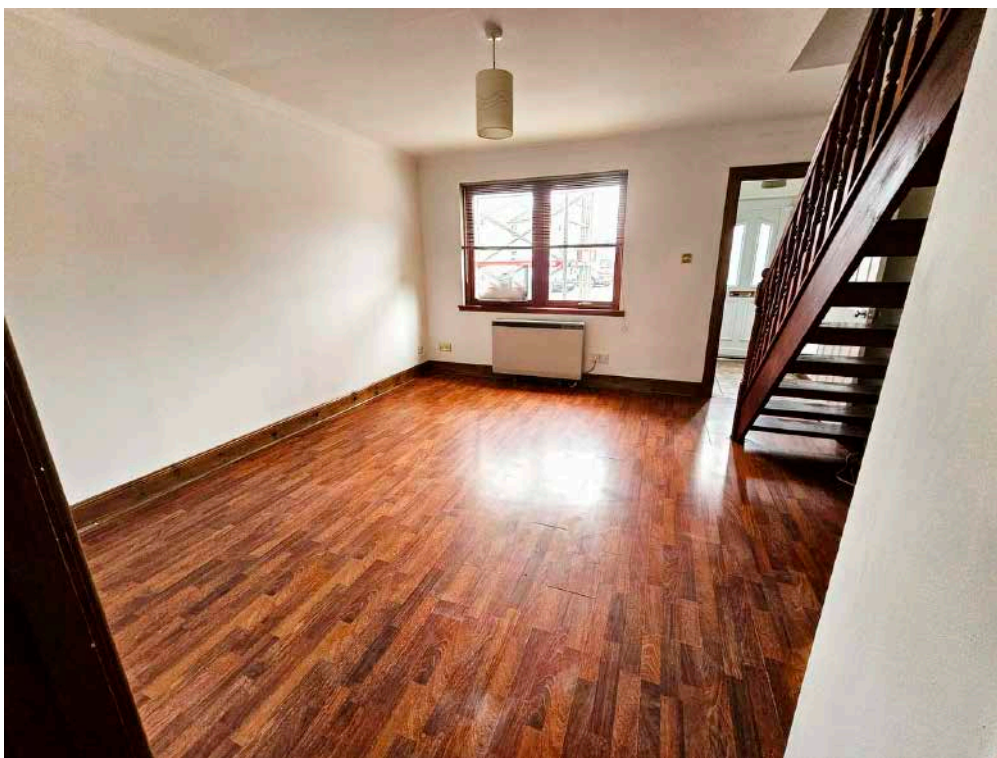




GILSON GRAY

LAW • PROPERTY • FINANCE

4 Tweed Mill Brae, Forfar



GILSON GRAY

LAW • PROPERTY • FINANCE

Tweed Mill Brae is situated in a small cul-de-sac location and forms part of an established residential area close to the town with a range of typical local amenities nearby. Externally, there are low maintenance gardens to the front and rear with private parking. Ideal property for a first time buyer.

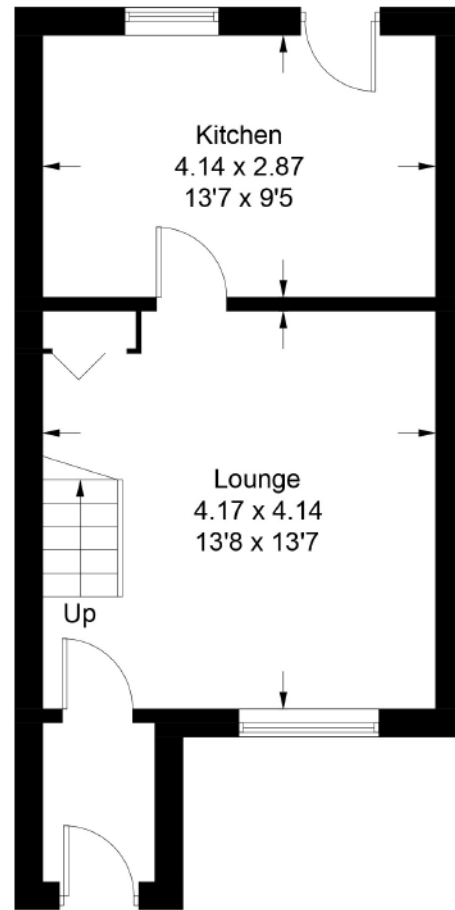
Early viewing highly recommended .

Features

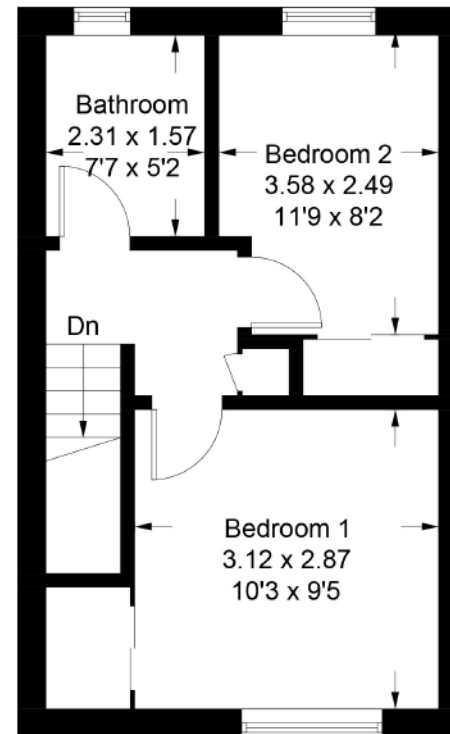
- Two storey end-terraced house
- Entrance vestibule
- Lounge
- Dining Kitchen
- 2 Bedrooms
- Bathroom
- ECH & DG
- Parking
- EPC: D



Floor plans



Ground Floor



First Floor

Illustration for identification purposes only, measurements are approximate, not to scale. floorplansUsketch.com © (ID965185)






GILSON GRAY
LAW • PROPERTY • FINANCE





EDINBURGH

29 Rutland Square
EH1 2BW
0131 516 5366

GLASGOW

160 West George Street
G2 2HQ
0141 530 2021

DUNDEE

2 West Marketgate
DD1 1QN
01382 201 000

EAST LOTHIAN

33 Westgate
EH39 4AG
01620 893 481

BORDERS

01890 880 008